

OptiMax Modular Unit -Tailor made for you

IteraSpace modular solutions are custom engineered for modular solution providers and their end customers. **OptiMax** units are based on the steel moment frame structure with a complete set of quick connection system, which enables coupling units together horizontally and vertically in no time. We will take into account the specifics you require and provide you with personalized spaces with customizable interior and exterior.

The Concept and Execution

Our modular solutions are based on the range of modules with sustainability, great design, safety, energy efficiency and total comfort, build into their DNA. We will take care of strategic material sourcing, production and quality control. The flexibility of **OptiMax** units even allows you to build an extra floor later or move your building, should your space requirements change. Modular solutions have never been so easy.

Flexible Modular Space

OptiMax modular buildings are suitable for different types of spaces. Whether you need an office, classroom, secure government building, dormitory, sports facility, or high-end hospitality building, **IteraSpace** is your reliable partner! Our modular units are incredibly sturdy, sustainable, non-combustible, and flexible to accommodate any wishes. From budget-oriented to high-scale building, we engineer the perfect solutions.

Contact Us



info@iteraspace.com
www.iteraspace.com



574-538-3838



@iteraspace



IteraSpace, 19260 CR 46, New Paris, IN 46553



SCAN ME

ITERASPACE
modular solutions

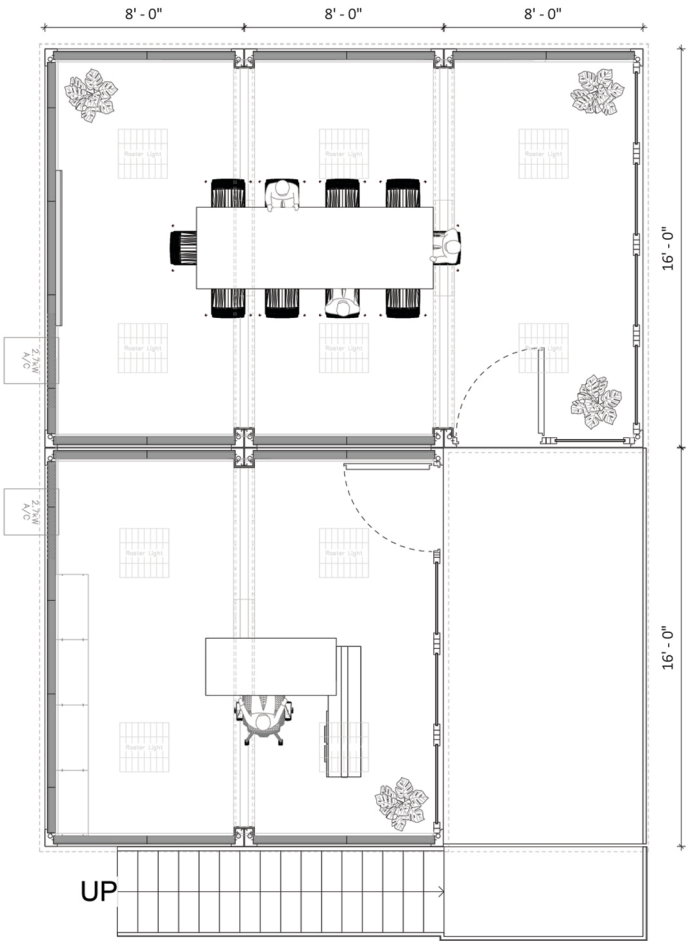
OFFICE

Office Spaces

www.iteraspace.com

Office

Office Spaces



Ground Floor of an Office Building



Individual Unit - Office and a Conference Room



New Level of Flexibility

IteraSpace's offices are super flexible and adaptable. They are incredibly sturdy - designed to withstand 160mph wind speeds while 3 stories stacked and Type II-B non-combustible, providing unparalleled safety for the occupants.

Tight construction site downtown or highly sensitive environment inside nuclear power plant? No problem for our offices, which expand by adding multiple modules and stack, increasing capacity without additional real estate needed. Furthermore, buildings can be disassembled, relocated and reconfigured in another location. Transport is super easy – no special permitting required.

Equipment

Step into the modern interior of the modular office, where carefully selected furniture enhances productivity and collaboration.

In the office space, ergonomic desks and chairs provide comfort for employees, while storage units keep documents and supplies organized. A conference room features a large table surrounded by sleek chairs, equipped with audiovisual technology for seamless presentations and meetings. The common area offers cozy seating options for informal discussions and breaks, fostering a sense of community among colleagues.



Technical Specifications

- 160 mph wind speed design load 3 story stacking or higher
- Type II-B non-combustible buildings
- Flexible module size: 8'x16', 8'x20', 8'x24', 8'x30, 10'x30'
- Steel moment frame with panelized walls
- Easy to deploy
- Easy to relocate
- Multiple color options

Modular Unit Data

- Electrical: NEC compliant
- Interior Height: 8'2" standard (up to 10')
- Roof Insulation: R30
- Floor Insulation: R21
- Wall Insulation: R15
- Floor Finish: Vinyl floor
- Ceiling Finish: Pure white, coil coated, smooth surface
- Wall Finish: Pure white, coil coated, smooth surface
- Lights: LED lighting / panels
- Sustainability: Great efficiency, fully recyclable materials

