

OptiMax Modular Unit -Tailor made for you

IteraSpace modular solutions are custom engineered for modular solution providers and their end customers. **OptiMax** units are based on the steel moment frame structure with a complete set of quick connection system, which enables coupling units together horizontally and vertically in no-time. We will take into account the specifics you require and provide you with personalized spaces with customizable interior and exterior.

The Concept and Execution

Our modular solutions are based on the range of modules with sustainability, great design, safety, energy efficiency and total comfort, build into their DNA. We will take care of strategic material sourcing, production and quality control. The flexibility of **OptiMax** units even allows you to build an extra floor later or move your building, should your space requirements change. Modular solutions have never been so easy.

Flexible Modular Space

OptiMax modular buildings are suitable for different types of spaces. Whether you need an office, classroom, secure government building, dormitory, sports facility, or high-end hospitality building, **IteraSpace** is your reliable partner! Our modular units are incredibly sturdy, sustainable, non-combustible, and flexible to accommodate any wishes. From budget-oriented to high-scale building, we engineer the perfect solutions.

Contact Us



info@iteraspace.com
www.iteraspace.com



574-538-3838



@iteraspace



IteraSpace, 19260 CR 46, New Paris, IN 46553



SCAN ME

ITERASPACE
modular solutions

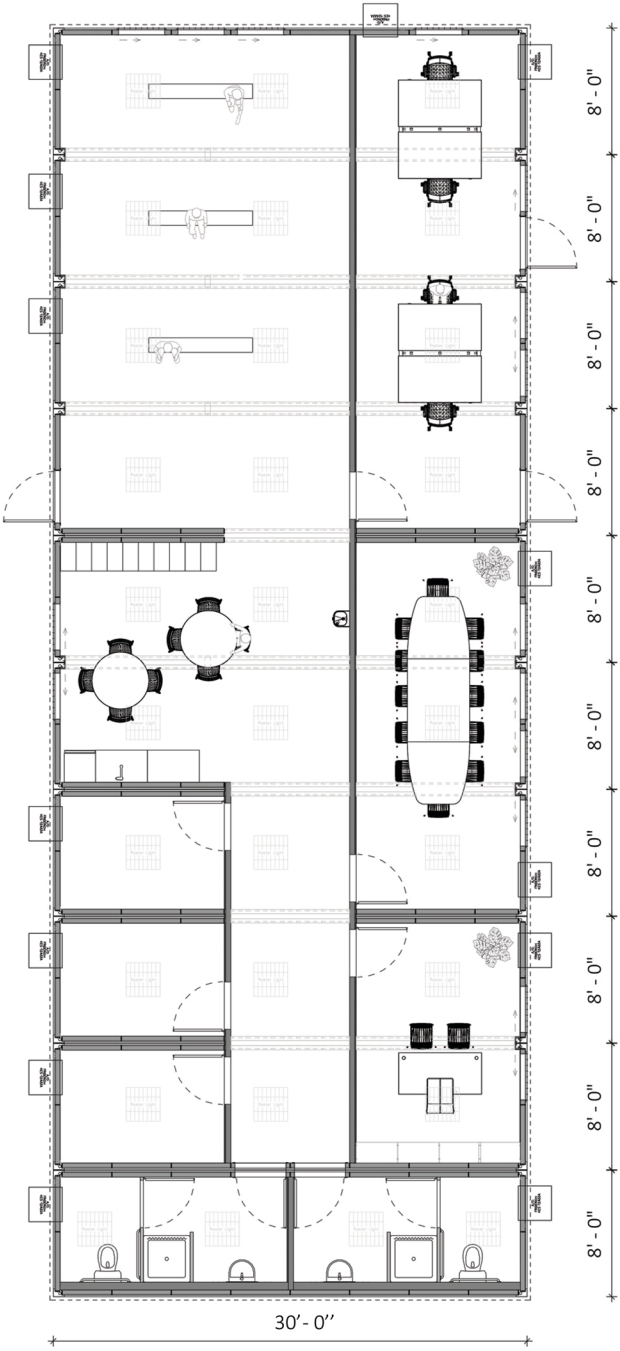
GOVERNMENT AND MILITARY

Military Facility

www.iteraspace.com

Government and Military

Office Building



Ground Floor of an Office Building inside Military Base

Exterior - Military Facility



Secure Modular Space

IteraSpace's government buildings meet the most stringent military standards. Our modules are incredibly sturdy, designed to withstand 160mph wind speeds while 3 stories stacked. Type II-B non-combustible, they provide unparalleled safety for the occupants.

Regular office space, Flight simulator building, Secure Modular Space, or any other type of building, government customers can choose among various builds.

The incredible flexibility of IteraSpaces's modular system means that expanding spaces is super easy by just adding additional modules.

Furthermore, because stackability is built into the DNA of our modular units, spaces can be expanded vertically by adding multiple stories on the top, increasing capacity without additional real estate needed. Furthermore, buildings can be disassembled, relocated and reconfigured in another location. Transport is super easy – no special permitting required.

Equipment

Enter the modular military facility, where every piece of furniture is meticulously chosen to support the needs of personnel and operations.

Within the offices, desks and chairs provide comfortable workspaces, while storage units keep essential documents and equipment organized. In the conference room, a large table surrounded by durable chairs offers a space for crucial discussions and strategic planning sessions.

With its tailored furniture selection, this facility stands ready to meet the demands of military operations with functionality and adaptability at its core, fostering a conducive environment for success. Its design reflects a commitment to efficiency and operational readiness, serving as a reliable hub for mission-critical tasks and collaboration. With its spacious design, it can serve as a functional hub for operational activities, providing a conducive environment for planning, training, coordination, and personnel support.



Technical Specifications

- 160 mph wind speed design load 3 story stacking or higher
- Type II-B non-combustible buildings
- Flexible module size: 8'x16', 8'x20', 8'x24', 8'x30, 10'x30'
- Steel moment frame with panelized walls
- Easy to deploy
- Easy to relocate
- Multiple color options

Modular Unit Data

- Electrical: NEC compliant
- Interior Height: 8'2" standard (up to 10')
- Roof Insulation: R30
- Floor Insulation: R21
- Wall Insulation: R15
- Floor Finish: Vinyl floor
- Ceiling Finish: Pure white, coil coated, smooth surface
- Wall Finish: Pure white, coil coated, smooth surface
- Lights: LED lighting / panels
- Sustainability: Great efficiency, fully recyclable materials

